

# ASCEND

by EVERGREEN

*Cloud Series*

Travel Trailers

Upload the family  
and get away



EVERGREEN  
RECREATIONAL VEHICLES

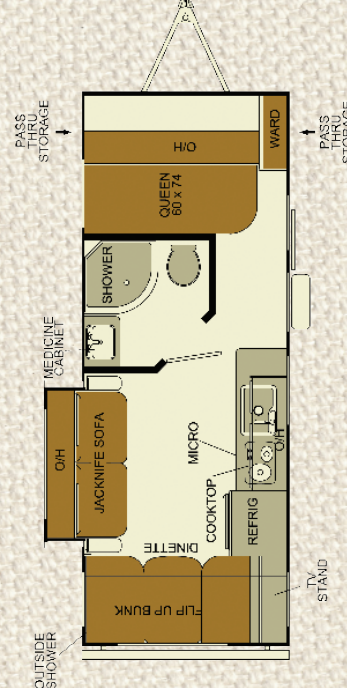
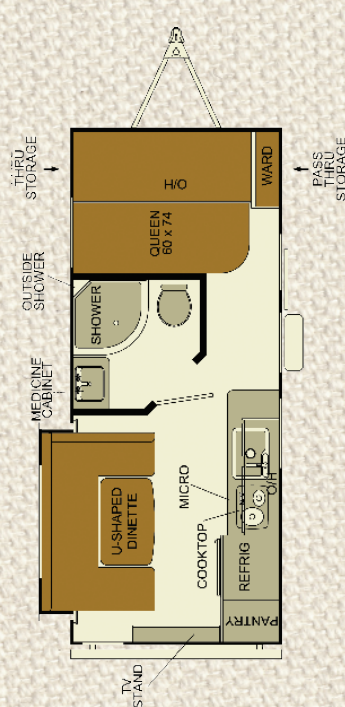
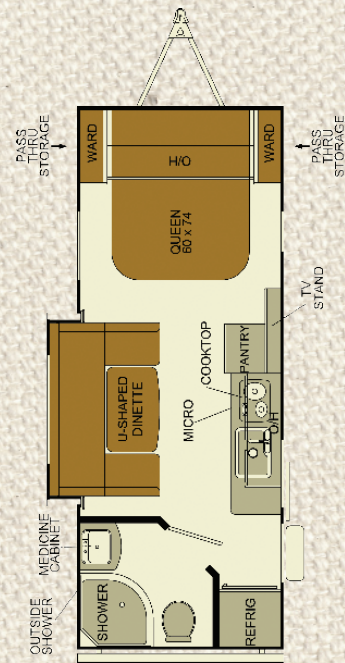
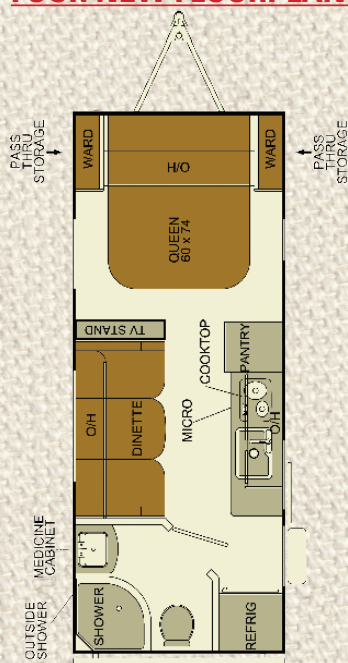


# The Ascend Cloud Series from EverGreen

The 2015 Ascend lineup from EverGreen expands with the new, super-lightweight Cloud series. True to its name, the Cloud is a super-lightweight travel trailer, perfect for those looking for a smaller trailer with all the standard features found in larger coaches. A smooth, curved exterior makes for an aerodynamic, fuel efficient coach. Four new floorplans in the Cloud series provide customers more choices in a lightweight towable with exciting features such as:

- Six-sided vacuum laminated construction • Barrelled laminated roof • 81-inch interior headroom • Enclosed heated underbelly
- Large double door refrigerator • Large tinted safety glass windows • Six gallon gas/electric/DSI water heater
- Skylight in living room and bath • Decorative window treatment with pleated shades • Beauflor padded floor • Ducted A/C
- Faced framed/solid-core wood cabinets • Plywood drawers with roller bearing glides • Large bath with radius shower pan

## FOUR NEW FLOORPLANS!



### MODEL CS181RB

Total Dry Weight (UWV) ..... TBD  
 Dry Hitch Weight (LBS)..... TBD  
 GVWR (LBS) ..... TBD  
 Fresh Water Capacity (GAL).....36  
 Gray Water Tank Capacity (GAL) .....29  
 Black Water Tank Capacity (GAL).....29  
 LP Capacity (LBS) .....40  
 Cargo Carrying Capacity (LBS) ..... TBD  
 Overall Length ..... 23' 3"  
 Height (including A/C)..... 10' 4"  
 Width..... 7' 7"  
 Bed Size ..... TBD  
 Power Awning Length ..... TBD  
 Tire Size .....ST205/75R14-C

### MODEL C183RB

Total Dry Weight (UWV) ..... TBD  
 Dry Hitch Weight (LBS)..... TBD  
 GVWR (LBS) ..... TBD  
 Fresh Water Capacity (GAL).....36  
 Gray Water Tank Capacity (GAL) .....29  
 Black Water Tank Capacity (GAL).....29  
 LP Capacity (LBS) .....40  
 Cargo Carrying Capacity (LBS) ..... TBD  
 Overall Length ..... 22' 11"  
 Height (including A/C)..... 10' 4"  
 Width..... 7' 7"  
 Bed Size ..... TBD  
 Power Awning Length ..... TBD  
 Tire Size .....ST205/75R14-C

### MODEL CS185DS

Total Dry Weight (UWV) ..... TBD  
 Dry Hitch Weight (LBS)..... TBD  
 GVWR (LBS) ..... TBD  
 Fresh Water Capacity (GAL).....36  
 Gray Water Tank Capacity (GAL) .....29  
 Black Water Tank Capacity (GAL).....29  
 LP Capacity (LBS) .....40  
 Cargo Carrying Capacity (LBS) ..... TBD  
 Overall Length ..... 22' 3"  
 Height (including A/C)..... 10' 4"  
 Width..... 7' 7"  
 Bed Size ..... TBD  
 Power Awning Length ..... TBD  
 Tire Size .....ST205/75R14-C

### MODEL C193RD

Total Dry Weight (UWV) .....3,630  
 Dry Hitch Weight (LBS).....440  
 GVWR (LBS) .....5,495  
 Fresh Water Capacity (GAL).....36  
 Gray Water Tank Capacity (GAL) .....29  
 Black Water Tank Capacity (GAL).....29  
 LP Capacity (LBS) .....40  
 Cargo Carrying Capacity (LBS) .....1,525  
 Overall Length ..... 23' 11"  
 Height (including A/C)..... 10' 4"  
 Width..... 7' 7"  
 Bed Size ..... TBD  
 Power Awning Length ..... TBD  
 Tire Size .....ST205/75R14-C

See the above dealer for further information and prices.

**EVERGREEN**  
 RECREATIONAL VEHICLES

10758 County Road 2 • Middlebury, IN 46540  
 Phone: (574) 825-4298 • Fax: (574) 825-4299



[www.GoEverGreenRV.com](http://www.GoEverGreenRV.com)  
[www.LifestyleLRV.com](http://www.LifestyleLRV.com)

